

DEVELOPED BY

JD[®]
HOLDING

📍 | Head Office : 340 Mall, 90 st.
Fifth Settlement, New Cairo

🌐 | www.jdholding-eg.com

📱🐦🌐 JD Holding

JD[®]
TOWER 10
MALL

☎️ 16175

About JD Holding

JD
TOWER 10
MALL

JD[®]
HOLDING

JD Holding was recently established in partnership between Jebel Real Estate Development and Abu Dhabi National Investment Company to develop a number of real estate projects in several prime locations, specifically in the New Administrative Capital.

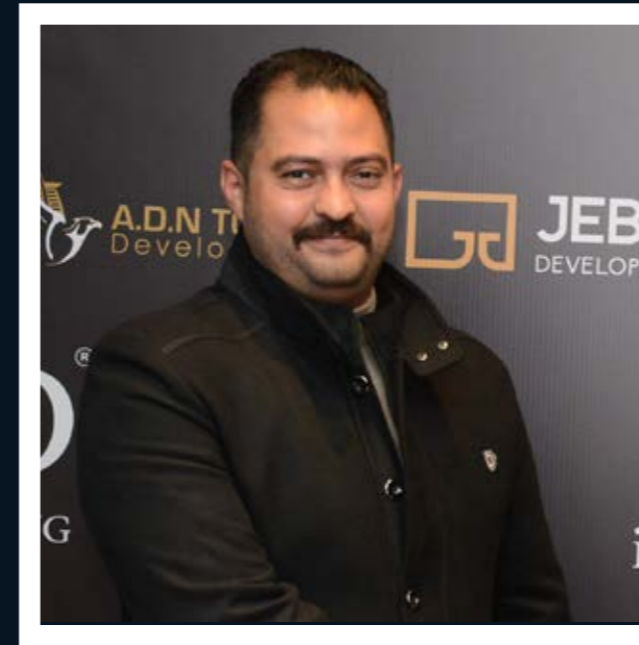
The company includes the expertise of Jabal Development Company, which has a great experience in the local market, especially the areas east of Cairo, and has grown a large number of projects, as well as Abu Dhabi Company, which has great experience in the development of distinctive real estate projects.

The local real estate market includes distinct investment opportunities based on real demand, due to the presence of a large population increase in need of various projects to serve between residential, commercial and administrative, and the orientation of the whole world to launch smart cities as well as Egypt in the launch of 4G cities makes it attractive for all citizens and the business community to be present in these new cities.

The company's plan includes the development of many projects in the coming period, plans to develop in the New Administrative Capital and several offers and is currently differentiating between them to choose what suits its plans.

The company will mainly rely on self-financing in the implementation its of its capital and shareholder projects and has a financial suitability to ensure the development of its projects on time.

The Company is set to develop a number of projects of such character in the New Administrative Capital during the coming period.



Eng/Haitham Elsherif
MANAGING DIRECTOR



Eng/Ahmed Attia Aletr
CEO



DOWNTOWN

The Downtown distinguished by the most premium locale in the heart of the New Capital on the circular road beside and the governmental district

Downtown Square is designed to encompass national and foreigner investments, headquarters of banks and multinational companies, a variety of hotels, dining venues, health care units, and offering myriad opportunities for professionals.



ABOUT PROJECT

JD Towers is an Emirate Egyptian integrated intelligence constructing a mixed-used building for Commercial, Administrative and Medical Solutions

JD Tower 10 is being built on an area of 2,200 sq. with a total Built area of 30%.

The building is a complex of 2 basement floors and Ground floor + Eight floors from ground floor to second floor commercial from third to fifth medical, from Sixth to eighth administrative. Costumed with four separate entrances. The building is designed on L Shape for more efficient traffic flow.

The building is also equipped with drive through stores and kiosk on the commercial ground floor, and a DBL (dinning Balcony lounge) on the second floor which stretches for 140M with a view of Al Masah Hotel and a landscape



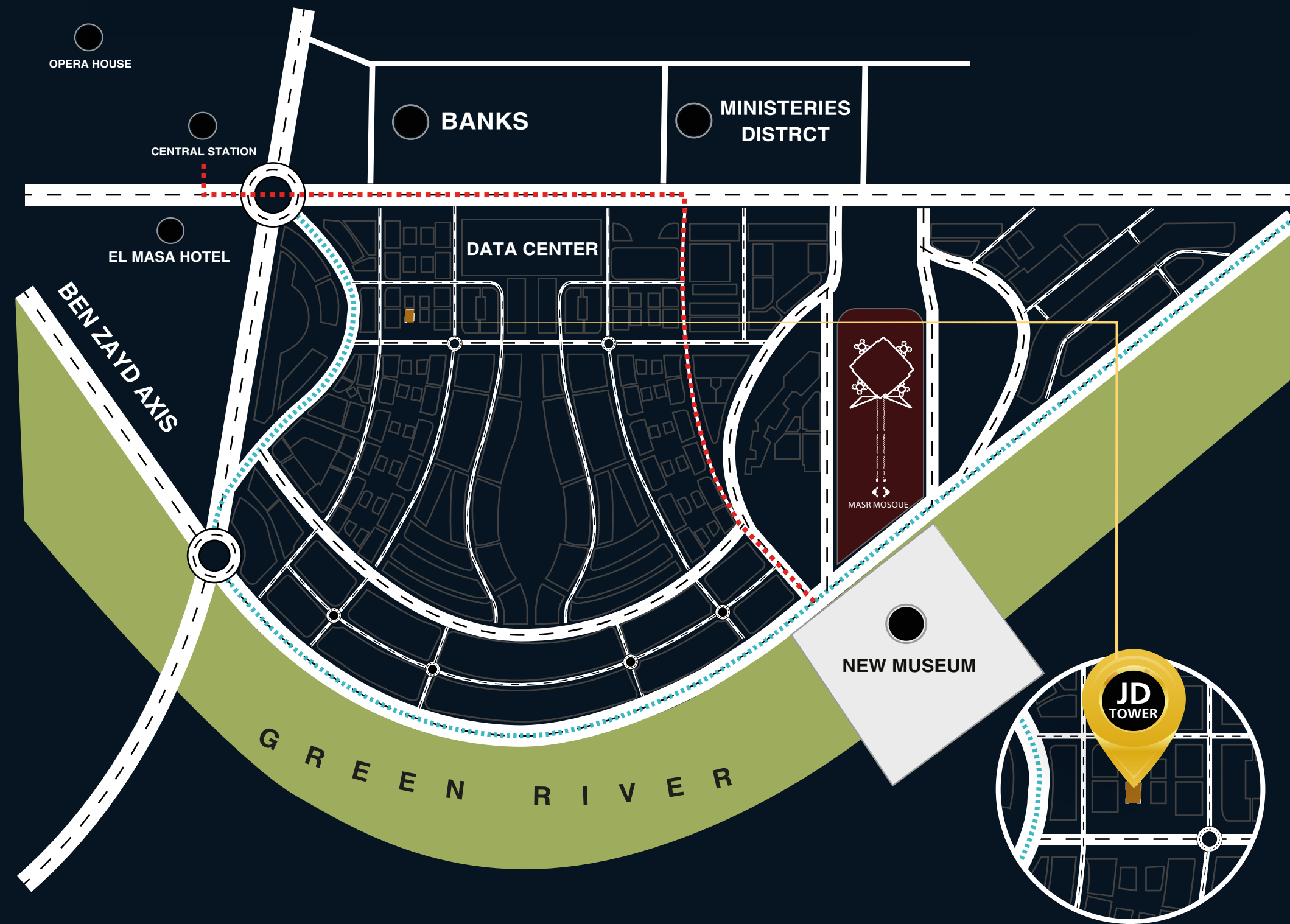
OUR STRATEGIC LOCATION

The selection of the New Administrative Capital to implement the first projects of the new entity comes within the framework of the importance of the New Administrative Capital as a national and investment project.

The New Administrative Capital has many promising investment opportunities attracting all local and foreign investors, and the start of government's relocation during the first half of 2021 will contribute to increasing the attractiveness of the city, in addition to the projects surrounding the government district.

JD Tower 10 is suited in the prime location within the New Administrative Capital Down Town (MO1-10) by which it is

- 1 min from Al Masa Hotel, Mono Rail Railway and Data Centre.
- 2 mins from Ministries District and Central Station.
- 3 mins from Opera House.
- 5 mins from Financial & Administrative District and Green Rivers.
- 6 mins from Ben Zaid Axes.
- 7 mins from New Museum.



BUILDING AND FLOORS

JD Tower 10 will be built on an area of 2,200 sqm with 2 basement floors to serve as Garage, Ground floors + eight floors. Designed on L Shape which assures a directed traffic flow

JD Tower 10 providing commercial specialties from ground floor to second floor, medical specialties from third to fifth, and administrative specialties from sixth to eighth. Customed with four separate entrances. Added to the project a food court in a 140 m² Balcony lounge



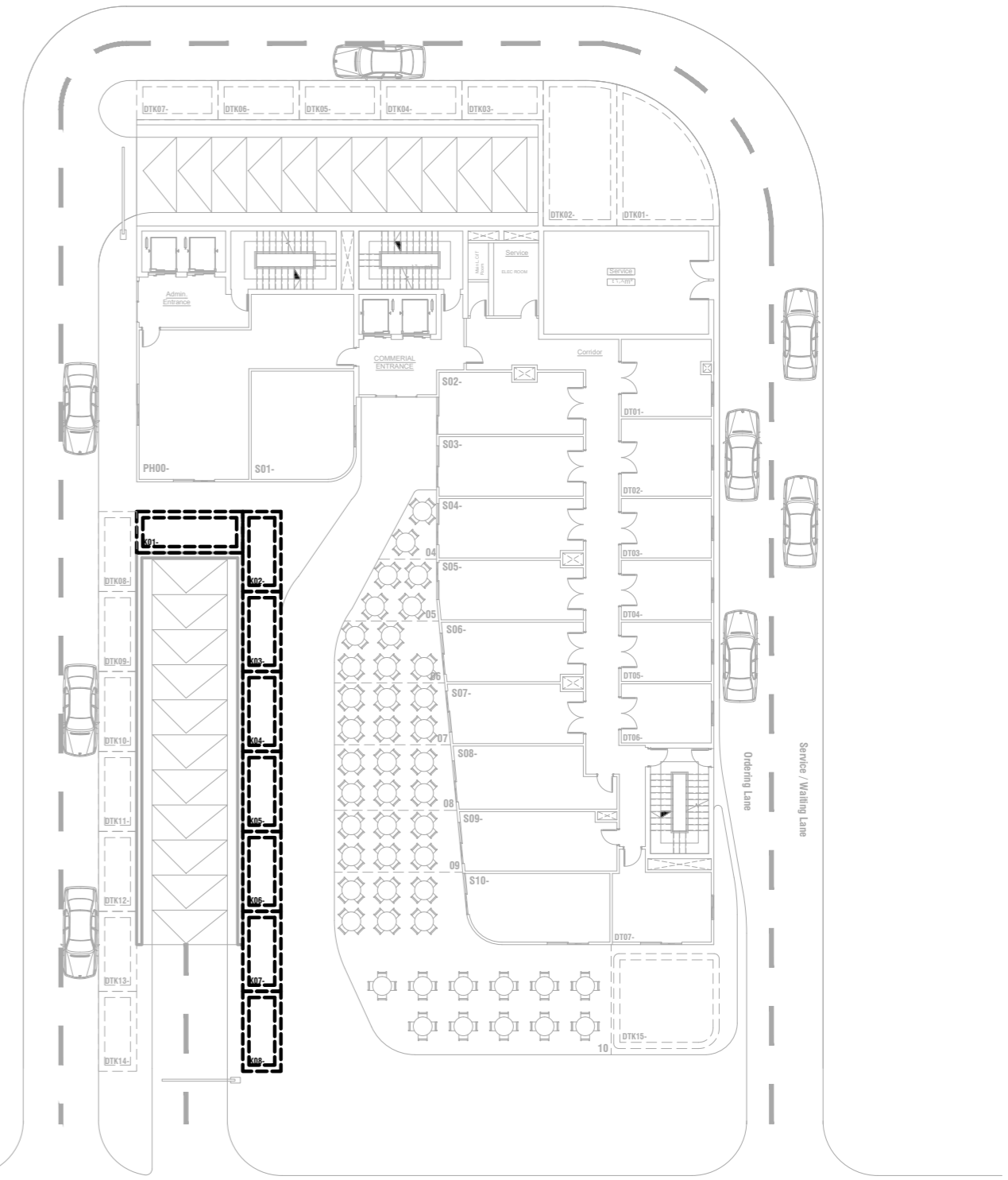
GROUND FLOOR

Kiosk

Shopping has never been easier and quicker, with our Kiosk Services for more flexible and efficient Retail with a verity of spaces that is supported with drive through services for even a quicker shopping.

TABLE AREA

CODE	K01-	K02-	K03-	K04-	K05-	K06-	K07-	K08-
M ²	15	10	10	10	10	10	10	10



GROUND FLOOR

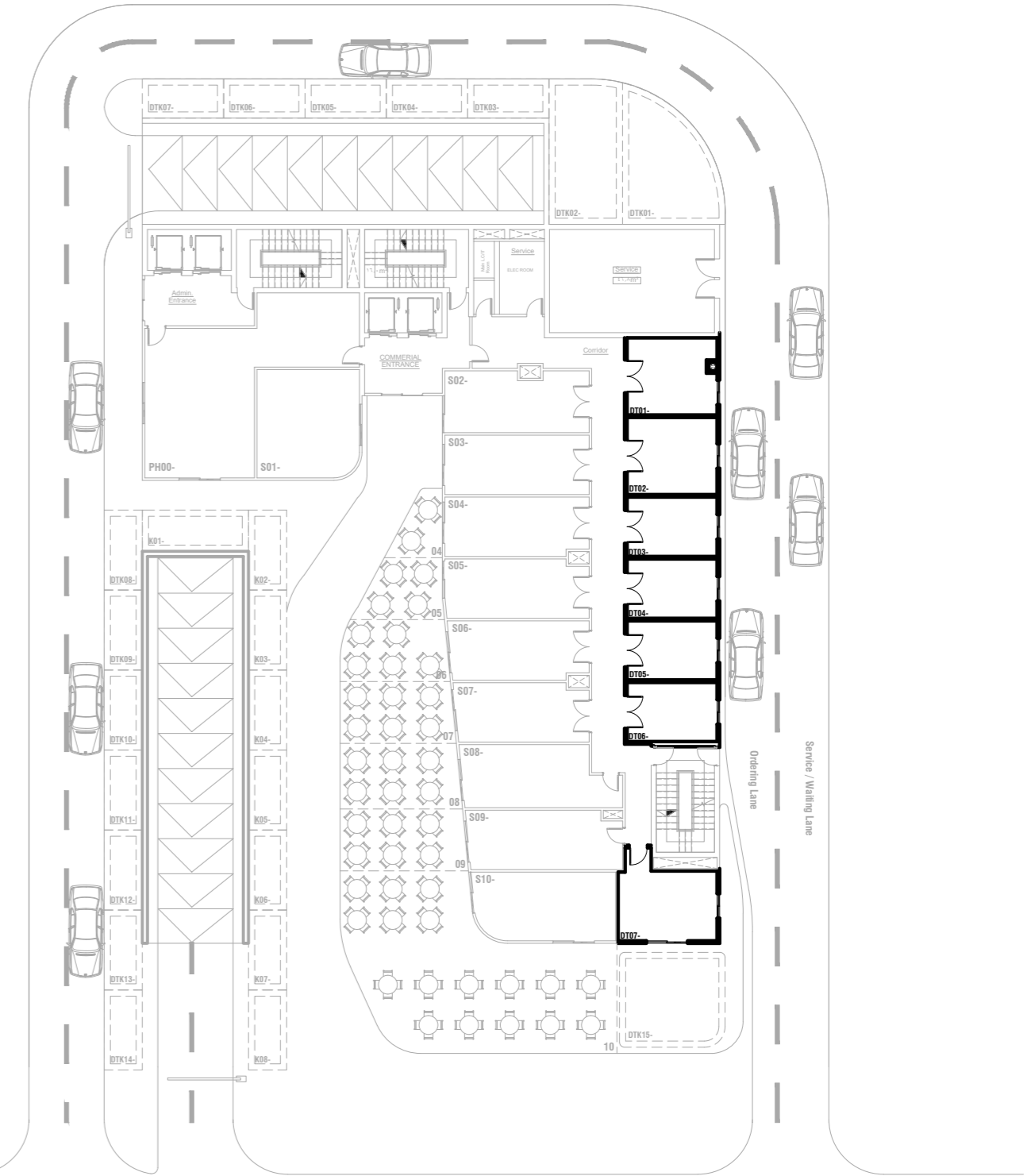
Drive Thru A

JD Tower 10 is the first Tower in the New Administrative Capital with Drive through Services for faster shopping without stopping

TABLE AREA

CODE	DT01-	DT02-	DT03-	DT04-	DT05-	DT06-	DT07-
M ²	28	27	21	21	21	22	33

JD TOWER 10 MALL



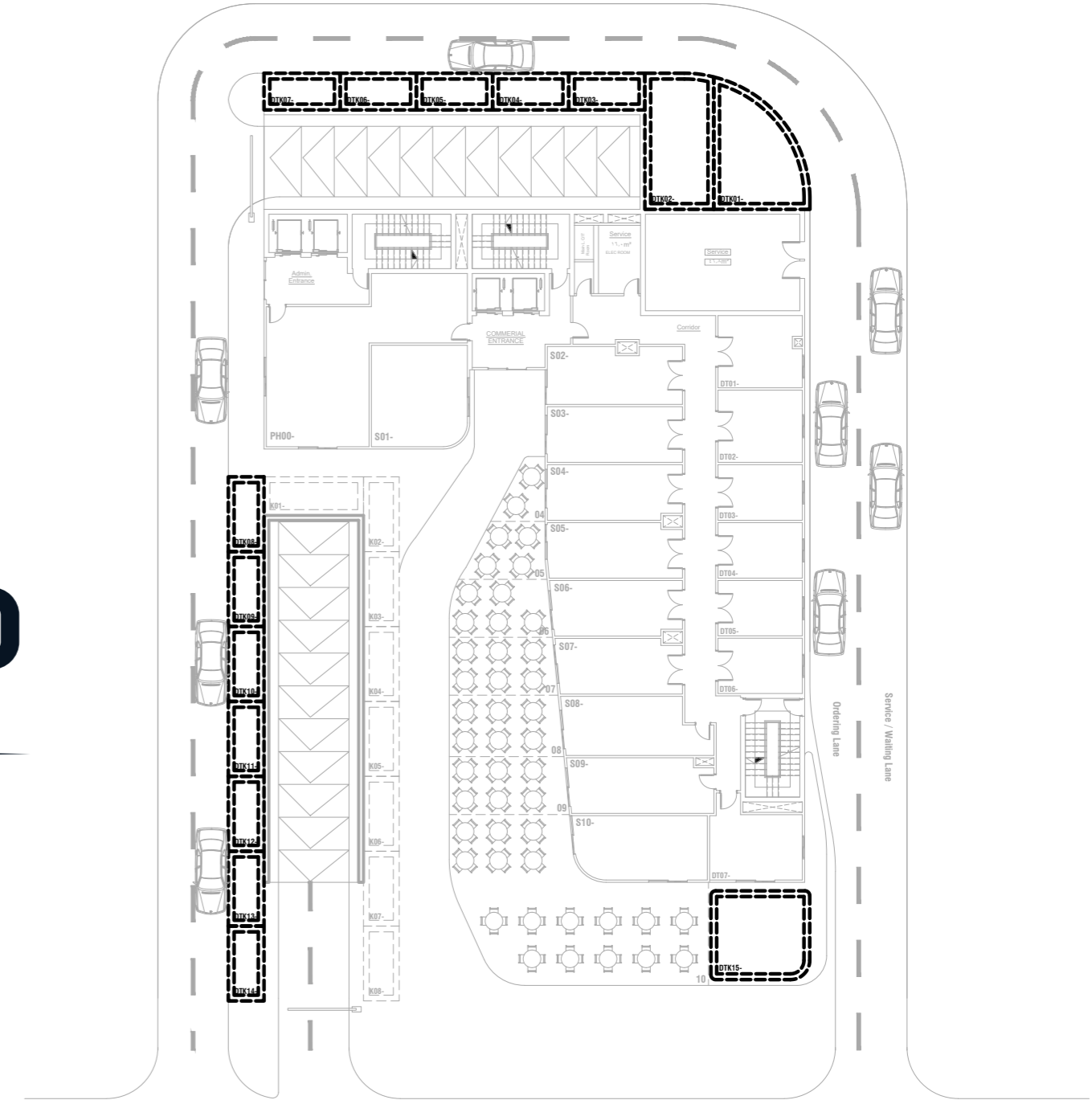
GROUND FLOOR PLAN DRIVE THRU KIOSKS

Drive thru B

TABLE AREA

CODE	DTK01-	DTK02-	DTK03-	DTK04-	DTK05-	DTK06-	DTK07-	DTK08-	DTK09-	DTK10-	DTK11-	DTK12-	DTK13-	DTK14-	DTK15-
M ²	40	38	10	10	10	10	10	10	10	10	10	10	10	10	35

JD
TOWER 10
MALL



GROUND FLOOR

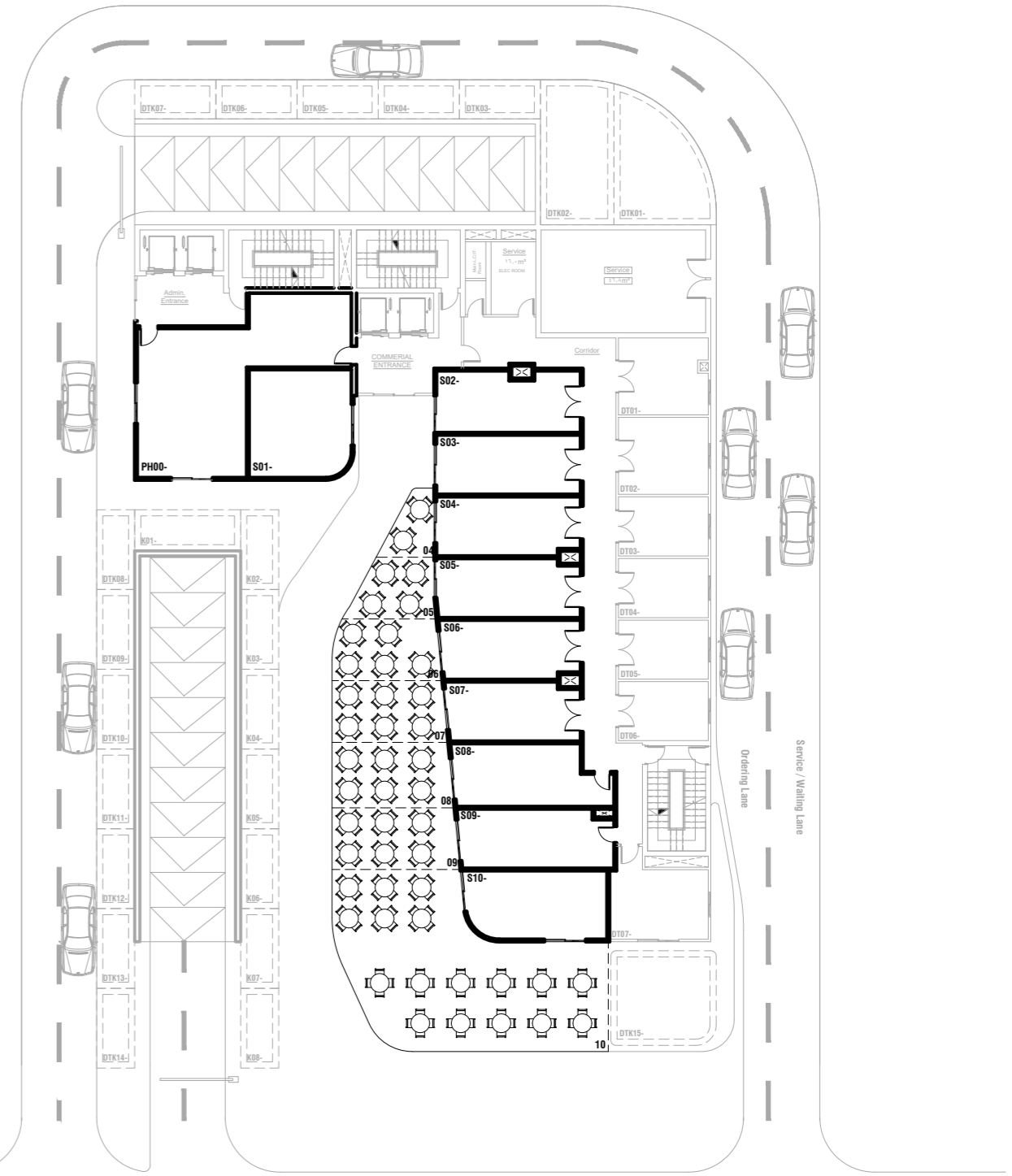
Commercial Units

TABLE AREA

CODE	PH00-	S01-	S02-	S03-	S04-	S05-	S06-	S07-	S08-	S09-	S10-
M ²	95	40	35	34	34	34	32	31	36	37	38
OPEN AREA / M ²					10	16	22	25	28	28	130

JD₁₀

TOWER MALL



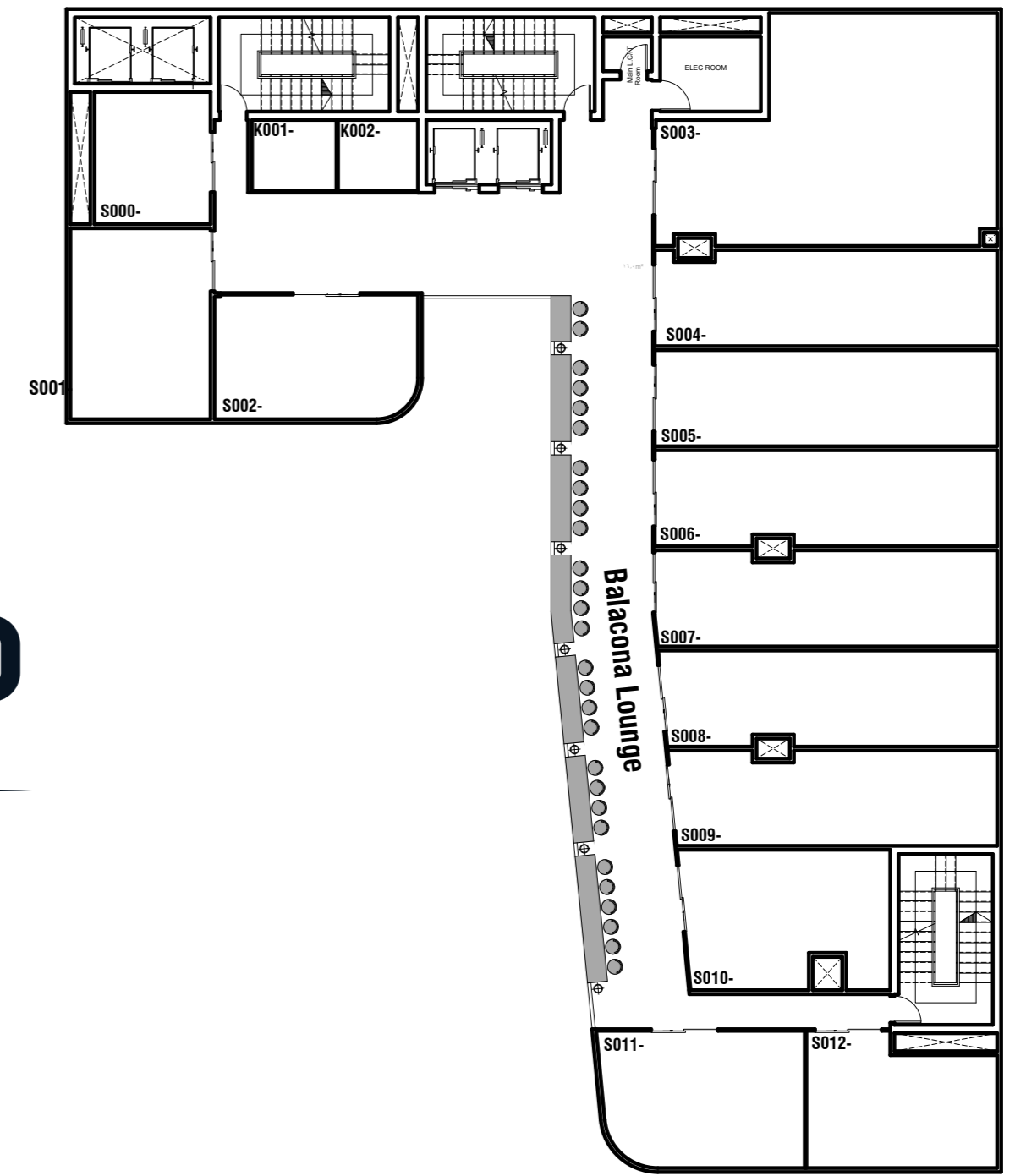
TYPICAL FLOOR

Commercial Units

TABLE AREA

CODE	S000-	S001-	S002-	S003-	S004-	S005-	S006-	S007-	S008-	S009-	S010-	S011-	S012-
M ²	30	40	36	100	50	50	50	50	48	45	44	40	38
CODE	K001-	K002-											
M ²	10	10											

JD
TOWER 10
MALL



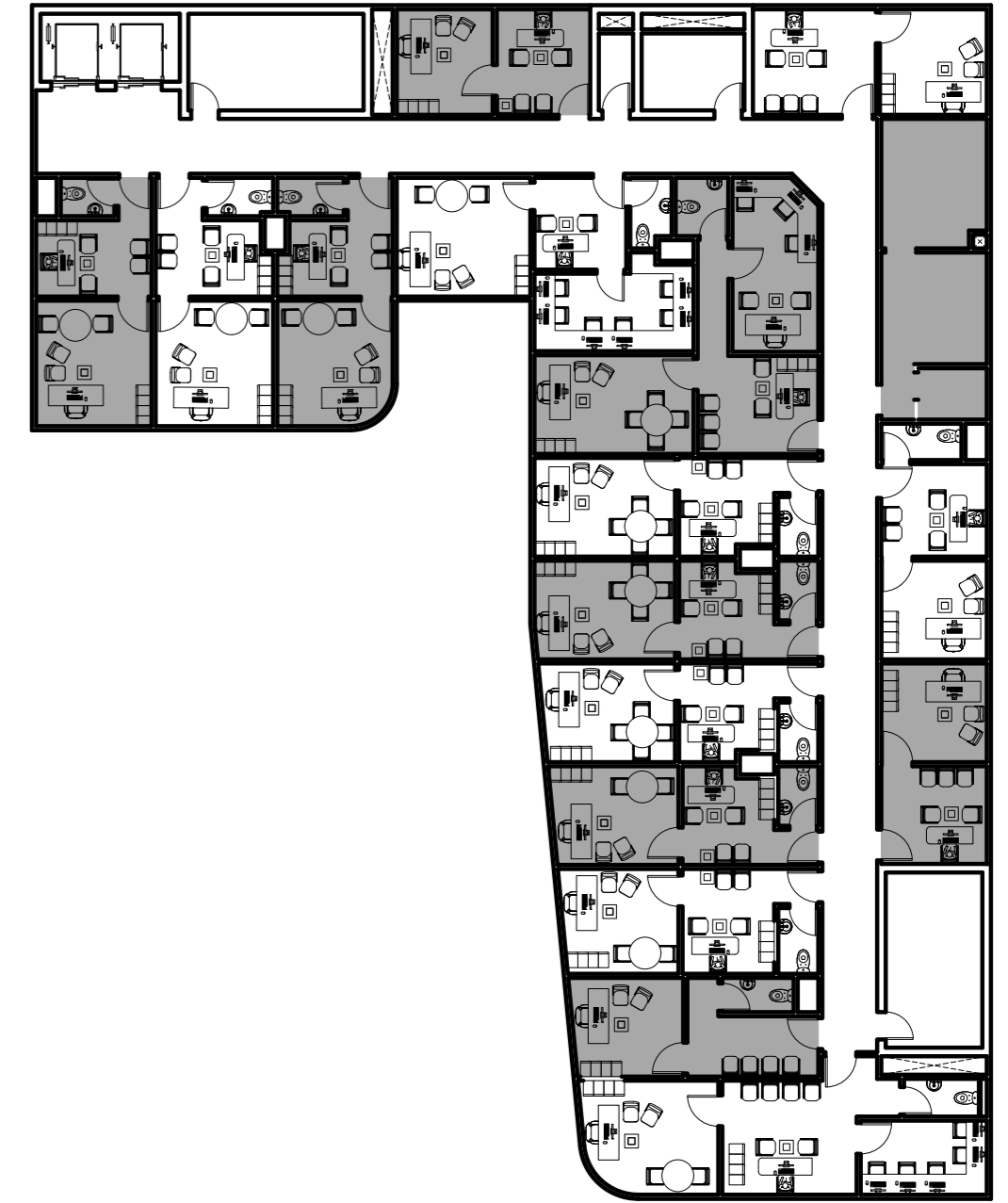
TYPICAL FLOOR

Administrative and Medical Units

TABLE AREA

CODE	A000-	A001-	A002-	A003-	A004-	A005-	A006-	A007-	A008-
M ²	51	40	40	40	34	60	36	70	36
CODE	A009-	A010-	A011-	A012-	A013-	A014-	A015-	A016-	
M ²	40	30	40	70	40	38	33	35	

JD
TOWER 10
MALL



FACILITIES AND SERVICES

Whether you are seeking investment, location, design, administrative and commercial activities in the Downtown area, JD Tower 10 has it all, and provides it with excellence, Friendly, 24-Hours staff go out of their way to make your stay perfect.

Facilities and Amenities that you can enjoy

DRIVE THROUGH



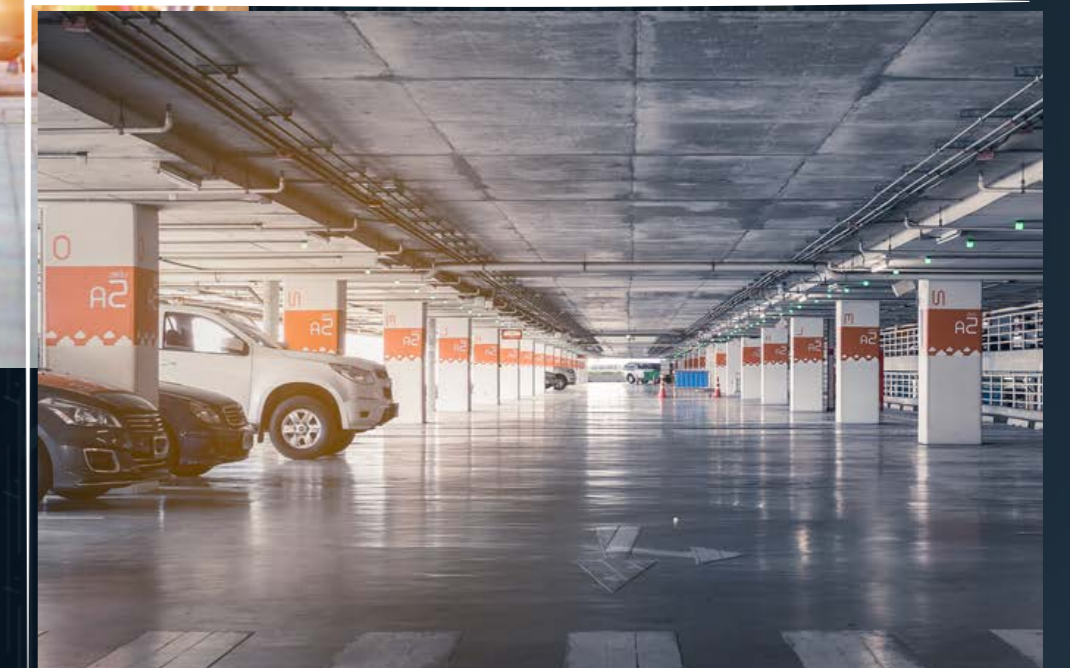
KIOSK ON COMMERCIAL FLOORS



- CAMERA SURVEILLANCE
- SECURITY 24/7
- CLEANING SERVICES



■ GARAGE DROP OFF AND PICK AREA



■ GARAGE ACCESS CONTROL



■ PANORAMA VIEW ON EL MASA



■ BALCONY LOUNGE

■ Personal and Firefighting Services



■ Internet Availability